

OHIO STATE SOCIETY OF WOMEN ENGINEERS

2070 Neil Ave
Hitchcock Hall, Room 131B
Columbus, OH 43210
osuswe@gmail.com



FY26

Hello! My name is Emily Claypool and I am the 2025-2026 Sponsorship Director for the Society of Women Engineers (SWE) Ohio State University section. This packet was created to streamline the involvement process for companies and to showcase available opportunities for collaboration.

OSU SWE strives to maintain mutually beneficial relationships with our company partners that allow recruiters to connect with talented female engineering students. If you have supported us in the past, **THANK YOU!** Your generous support is crucial in allowing our section to promote the development of women in engineering.

In this packet, you will find information about:

- **Our section**
- **Benefits** for each level of sponsorship
- Available sponsorship and involvement **opportunities**

OSU SWE offers a variety of different events to help support our members and would love for your company to get involved and support our mission to encourage and empower these talented and driven young women. Thank you in advance and I look forward to working with you! If you have any questions about the information in this packet, please do not hesitate to email or call me.

Sincerely,

Emily Claypool (B.S. Chemical Engineering '26)

SWE Sponsorship Director - The Ohio State University

claypool.76@osu.edu / (419)-450-7930



**Please scan this QR code to fill out the
Sponsorship INTEREST Form or go to:
<https://go.osu.edu/fy26sponsorship>**

Table of Contents

About Ohio State SWE	3
Important Dates	5
Sponsorship Levels and Benefits	7
Descriptions of Benefits	8
Sponsorship FAQ	11
Welcome to Our Community	13
Outreach	15
Education & Affinity Groups	18
Scholarships & Conferences	20
Professional Development (PD)	23
Thank you to our Sponsors!	26

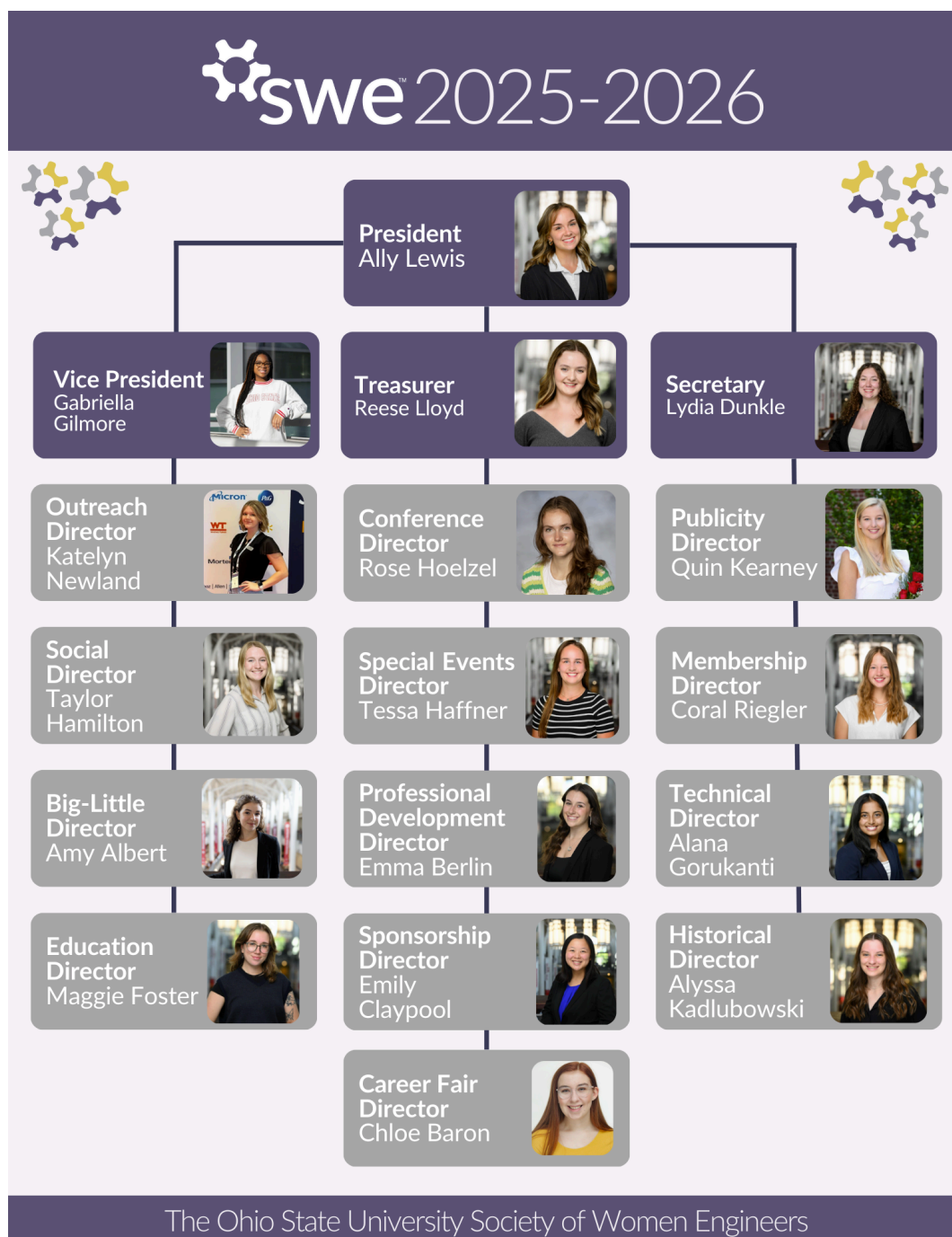
About Ohio State SWE

The Society of Women Engineers (SWE) is a non-profit educational and service-oriented professional organization that promotes the development of women in STEM fields at the undergraduate, graduate, and professional levels. Please visit <https://swe.org/> for more information about the society.

Ohio State SWE is committed to developing well-rounded women in engineering by exemplifying societal SWE's core values of integrity, inclusion, mutual support, professional excellence, and trust. Opportunities for our members include:

1. Networking Events
2. Engineering Outreach
3. Mentorship
4. Special Events
5. Scholarships

New ideas for company hosted events or collaborations are always welcome, whether that may be a social, professional, small or large event.



Our section has an extensive network of leaders who help guide the mission of OSU SWE through their hard work and dedication. Above is a chart detailing the organization of our section which includes our Executive Board as well as the various directors/officers.

If you are interested in collaborating with any of our officers, please reach out to Emily Claypool at claypool.76@osu.edu and she will get you in contact with them!

Important Dates

- **May 1:** Sponsorship Process begins for FY26 - we will send out an email with a copy of this packet and a link to an AirTable Form to express interest in sponsorship.
 - Link: go.osu.edu/fy26sponsorship (also can be accessed via QR code on page 1)
 - Note that event priority status is assigned **first come, first serve** based on when this interest form is completed - this **does not guarantee** your official invite to collaborate with us in an event.
- **June 2:** Deadline to **complete the FY26 interest form** (at 11:59 PM) to be considered for **Fall PD Event, Spring PD Event, Fall Networking Night, OR Spring Networking Night Priority Status.**
 - Note that this form is **non-binding** and documents **INTEREST** in certain events, so we can begin planning on our end. June 2 is **NOT the deadline for an official commitment to sponsorship.**
- Expect a **confirmation email** from the Sponsorship Director, Emily Claypool, within a couple days after June 2nd - please **respond to the confirmation email within 2 weeks of receiving it** so we can move forward with planning.
 - If you do not respond to the confirmation email, you may forfeit your spot to work with our section - as long as you confirm that you're still planning on being a sponsor, we will continue to consider you for sponsor opportunities.
 - While you don't need a specific dollar amount confirmed, we do need confirmation that your company intends to sponsor us at least at the \$500 level to be considered for a Spring PD Event.
- **Mid - Late June:** Once we receive a response from your company, Emily Claypool will put you in contact with our PD or Career Fair Director.
 - If you do not respond to the PD or Career Fair Director's email within **2 weeks** of receiving it, we will move on to the next company that is interested in working with us.
- **July:** PD and Career Fair Directors will begin their planning for their events in the fall.
 - If you do not get a chance to partner with us in the fall and are still interested, we will reach out individually and list alternative events based on officer interest.

- **August 25:** First day you can send in money to OSU SWE for your sponsorship package.
 - We will continue collecting money throughout the school year.
- **Early October:** Expect an email from Emily Claypool to confirm which companies are interested in still working with us for the spring semester.
 - Please **respond to the spring confirmation email within 2 weeks of receiving it.**
 - We will prioritize Spring PD Event and Spring Networking Night Priority Status to companies in the following scenarios:
 - 1. Sponsors that initially filled out the interest form choosing Spring PD Event or Spring Networking Night Priority Status.
 - 2. Sponsors that expressed interest in a fall event, but were unable to work with us in the fall.
- **Mid-Late October:** Once we receive a response from your company, Emily Claypool will put you in contact with our PD or Career Fair Director.
 - If you do not respond to the PD or Career Fair Director's email within **2 weeks** of receiving it, we will move on to the next company that is interested in working with us.

Sponsorship Levels and Benefits

	Brutus	Buckeye	Scarlet	Gray
Donation Levels	≥ \$5,000	≥ \$2,500	≥ \$1,000	< \$1,000
Logo on Website & Sponsorship Packet	✓	✓	✓	✓
Access to Member Resume Book	✓	✓	✓	✓
Spring PD Event Priority Status	✓ *	✓ *	✓ *	✓ \$500 minimum donation
Invitation to Last Monthly Meeting	✓	✓	✓	✓
Fall PD Event Priority Status	✓ *	✓ *	✓ *	
Spring Networking Night Priority Status	✓ **	✓ **	✓	
Fall Networking Night Priority Status	✓ **	✓ **		
Logo on Newsletter	✓	✓		
Logo on General Body Meeting Slides	✓	✓		
Feature on Social Media	✓			
Company Recruiting Materials at General Body Meetings	✓			

***Must choose either Fall OR Spring PD Event Priority Status (cannot purchase both Fall and Spring Priority Status)**

****Must choose either Fall OR Spring Networking Night Priority Status (cannot purchase both Fall and Spring Priority Status)**

*** **Must prioritize PD Event or Networking Night Priority Status in the sponsorship interest form**

Descriptions of Benefits

Logo on Website & Sponsorship Packet

- Your company's logo will be featured on our official website and sponsorship packet for the next fiscal year, recognizing your contribution and support of OSU SWE.

Access to Member Resume Book

- Your company will receive access to OSU SWE's official resume book, which contains resumes from our members of various majors and graduating years.
- This is a valuable recruitment resource for internships, co-ops, and full-time positions.

Fall and Spring Professional Development (PD) Event Priority Status (\$500 minimum donation for Spring, \$1,000 minimum donation for Fall)

- *If you are interested in the Brutus, Buckeye, or Scarlet sponsorship levels, we ask that you choose either the Fall OR Spring PD Event Priority Status benefit if you are interested.*
- A PD Event allows your recruiters to interact with our members through events such as resume reviews, elevator pitch prep, career fair prep, mock interviews, etc.
- This is **NOT a company info session**, and while you're allowed to recruit and network on behalf of your company, we will primarily focus on providing our members with beneficial career development skills and knowledge.

Invitation to Last Monthly Meeting (MM)

- Your company will receive an invite to our last general body meeting or "Monthly Meeting" of the academic year, recognizing your contribution and support of OSU SWE.

Fall and Spring Networking Night Priority Status (\$1,000 minimum donation for Spring, \$2,500 minimum donation for Fall)

- ***If you are interested in the Brutus or Buckeye sponsorship levels, we ask that you choose either the Fall Networking Night OR Spring Networking Night Status if you are interested.***
- Networking Night is a more casual opportunity for your company representatives to recruit our members for internships/co-ops and full-time positions before the Engineering Expo Career Fair in the fall or the SWE Career Fair in the spring.

Logo on Newsletter

- Your company's logo will be featured in our weekly newsletter sent to members, recognizing your contribution and support of OSU SWE.

Logo on General Body Meeting Slide

- Your company's logo will be featured on a slide during our monthly General Body Meetings and will be seen by a large body of our members who attend them, recognizing your contribution and support of OSU SWE.

Feature on Social Media

- Your company will have the opportunity to work directly with our Publicity Director to be featured on OSU SWE's official social media platforms.
 - If you have internship/co-op/full-time positions, this is a great way to let our members know more about your company and available positions to apply for.

Company Recruiting Materials at General Body Meetings

- Your company will have the opportunity to send us a single promotional PowerPoint slide that SWE will present at a General Body Meeting.
 - Must be **provided at least 1 week in advance of the meeting.**
- Promotional materials can be handed out to members at our general body meetings (i.e.: pens, notebooks, bags, flyers, etc.), but this must be funded and sent by your company.

Sponsorship FAQ

How can my company become a sponsor?

- Fill out the following AirTable Form for us to record your information and interests:
go.osu.edu/fy26sponsorship (also can be accessed via QR code on page 1)
- Emily Claypool (claypool.76@osu.edu) will reach back out to you shortly discussing additional next steps in the sponsorship process.

When can my company become a sponsor?

- We will begin reaching out to companies beginning **May 1**.
 - If you reach out to us before May, we will add your contact information to our email list and reach out to you on May 1.
- **June 2** is the deadline to **express interest** in purchasing Fall/Spring PD Event (with a minimum donation of \$500 for Spring and \$1,000 for Fall) OR Fall/Spring Networking Night (with a minimum donation of \$1,000 for Spring and \$2,500 for Fall) Priority Status.
- You can donate any amount of money at any time after **August 25**, but if you do not **express interest** in the Fall/Spring PD Event OR Fall/Spring Networking Night Priority Status before their specified deadlines, we will not consider you for these events.

Do I have to be a committed sponsor by June 2 if I want to host an event with OSU SWE in the fall?

- No! By June 2nd, we simply **want to know the company's INTEREST in certain events** so we can begin planning on our end.
 - If you are interested in the Fall OR Spring PD Event Priority Status, note that there is a required **minimum donation of \$500 for Spring and \$1,000 for Fall**. However, this does not guarantee PD Event Priority Status.

- If you are interested in the Fall OR Spring Networking Night Priority Status, note that there is a required **minimum donation of \$1,000 for Spring and \$2,500 for Fall**. However, this does not guarantee Networking Night Priority Status.
- June 2 is **NOT the deadline for an official commitment to sponsorship** and your company can get back to us later about what type of sponsorship package you are interested in as long as you communicate this in your response to our confirmation email.

Our company does not currently have the funds to contribute towards a sponsorship package, but we still want to stay in touch with OSU SWE. How can we still engage with your members?

- There are still different ways for you to remain engaged with OSU SWE if you are unable to be a sponsor at this time.
- The **SWE Career Fair** is held during the Spring Semester and is open to all companies!
 - This is a smaller career fair and is open to all students in the College of Engineering, but it is run by SWE and Engineering Career Services (ECS) with many of our members in attendance.
 - Learn more at: <https://ecs.osu.edu/career-fairs/swe-career-fair>
- If you have any events or upcoming opportunities that your company would like advertised, please feel free to send them to Emily Claypool (claypool.76@osu.edu) so we can send any fliers/promotional materials in our **communications forum with over 1,300 members** (and growing!).

What are my payment options?

- If you are a **Buckeye** or **Brutus** level sponsor, we ask that you send us money via **check**.
- If you are a **Scarlet** or **Gray** level sponsor, we ask that you send us money via **check** or **PayPal** (we will reach out to you with a link).

Welcome to Our Community

Monthly Meetings



Our staple general body meetings are known as “Monthly Meetings” when our organization comes together to share upcoming events and

opportunities and foster a strong sense of community. Around 200-300 members attend these meetings every month, in which case we provide food, beverages, and activities to all who attend. If you are a **Brutus level sponsor**, you have the opportunity to provide promotional materials that can be distributed to members during a meeting, as well as create a single promotional PowerPoint slide that will be presented to our members at the meeting’s end. This is the best opportunity to reach a large audience while sharing relevant opportunities to our members.

Mentorship: Big-Little Program

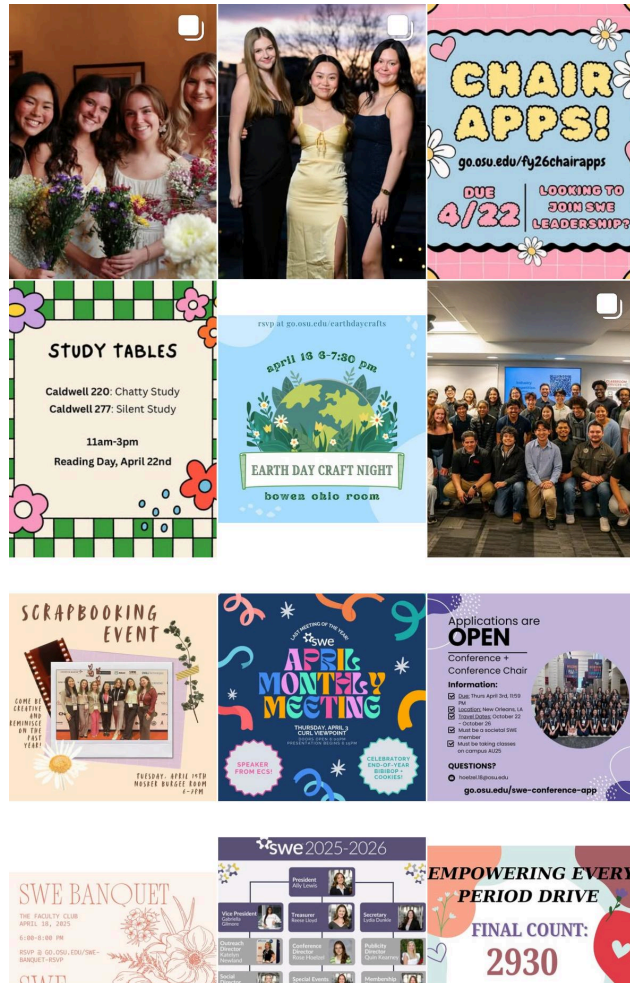
In this program, “littles” (any member seeking mentorship and advice) are assigned to a “big” (an upperclassman member looking to offer guidance and serve as a mentor) according to major, interests, and availability. Together the pair/family participate in a variety of special SWE events and other activities around OSU and Columbus. These



connections provide each member with an opportunity to grow professionally, meet other SWE members, and enhance their overall well-being and college experience.

Social Media

Our section is found on a variety of social media platforms such as Instagram, Facebook, LinkedIn, TikTok, and more! Our Instagram is especially popular with over 2,300 followers and counting. Our posts and stories showcase events, upcoming opportunities, and members, and have significant exposure. As a **Brutus level sponsor**, you have the opportunity to be featured on our social media platforms by collaborating with our Publicity Director, Quin Kearney. We would especially like to feature our sponsors in the fall before the Engineering Career Fair, and in the spring before the SWE Career Fair.



We are also open to sharing your messages in our organization's official group messaging platform, Slack. In our "Job Opportunities" channel with 1,300+ members and growing, we share various messages and upcoming opportunities from companies. **If you would like your**

message shared with our members in this way, please reach out directly to the Sponsorship Director Emily Claypool at claypool.76@osu.edu!

Outreach

As an organization, OSU SWE is dedicated to giving back to the community while also strengthening it through education and awareness. We are involved in and host a variety of events to give members many different opportunities for them to volunteer as well as learn more about different issues and topics. **If you're interested in getting involved in any of these events that make an impact on our community, please reach out for more ways to get involved!**



Buckeyethon

OSU SWE forms a team to participate in Ohio State's annual Buckeyethon to raise money and awareness for children with pediatric cancer and blood disorders at Nationwide Children's Hospital. Our team works to fundraise through various events and initiatives, one of which being a "Winter Brunch Fundraiser" where students donate money to receive food. Buckeyethon culminates in a dance marathon where the team celebrates alongside Nationwide children and their families.



We are currently looking for a company to sponsor our 2026 team! By donating money towards our fundraising events, we will be able to operate without incurring any startup costs so 100% of student donations go towards Nationwide Children's Hospital. As a sponsor, we would proudly represent your company at OSU's Dance Marathon by incorporating your logo onto various swag items.

Discovering Engineering



OSU SWE is committed to igniting a passion for engineering in young girls and students of all ages, and we are proud to partner with organizations including the Girls Scouts and College Mentors for Kids. Each year, OSU SWE students give presentations and lead activities introducing elementary through high school students to various engineering disciplines through hands-on opportunities.

At the beginning of the school year, we will feature an Outreach presentation at our first Monthly Meeting. Our Outreach Director will present all available volunteer opportunities to promote excitement and interest surrounding these events.

Uptown Westerville Festival

Last year, OSU SWE was invited to participate as part of the “science street” in the Uptown Westerville Festival. This local street festival is family-friendly with vendors,



food trucks, and a street filled with different science booths. OSU SWE featured hovercrafts



composed of CDs, bottle caps, and balloons, which were quickly completed at the booth and able to be transported

home with the children. Middle schoolers were able to participate in this experiment while our members helped create excitement around science in these young minds.

Girl Scout STEM Stations Collaboration

Our section is planning to collaborate with other SWE sections for a day to host an event for Girl Scouts in elementary school. The girl scouts will be encouraged to participate in STEM activities and stations throughout the event. Our members will be role models who guide the children in learning engineering skills and developing an interest in SWE at a young age.



If you are interested in donating supplies or sponsoring one of our specific events, any help would be greatly appreciated! As a sponsor for an Outreach-specific event, your company logo will be included on our PowerPoints/fliers that we distribute.

Also, if your company is interested in donating any fun company promotional items (i.e.: stress toys, bouncy balls, fidget spinners, etc.), we would be happy to pass them out to the children we work with at these events!

Education & Affinity Groups

OSU SWE is committed to supporting the education of our members both inside and outside the classroom. We support the development of our members as lifelong learners and host events to help our members feel confident in their transition to adulthood so that they develop both professionally and personally.

As a section, we have four active affinity groups, LGBTQ+, DisAbility, HeForSWE, and Asian Connections, which all offer unique opportunities to get involved in allyship at the collegiate level. We are also looking to develop the African American Affinity Group this year. Many studies show that diversity and allyship boost productivity and performance of engineering teams. By providing allies with the tools they need to understand and participate in allyship, SWE invests in the future of engineering.

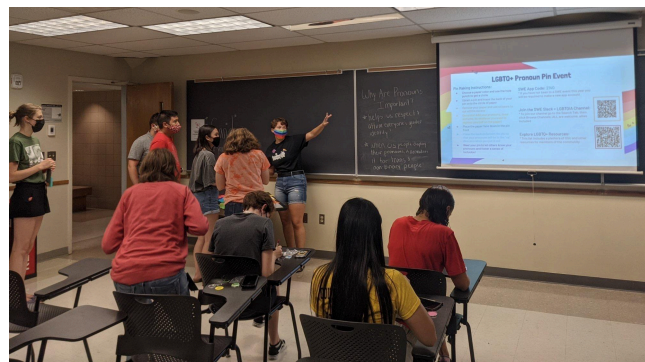
If you would like to sponsor/participate in any of these events or learn how to get more involved with this section of our organization, we would be happy to work with you!

Diversity in Industry Panel

Our affinity groups act as a community to support and advocate for these members at a collegiate and professional level.

This event will focus on the intersections of identity and allyship. We want to learn more about how members of the LGBTQ+, disabled, or other minority communities and their allies

can navigate their careers and support one another. This event will most likely be hosted during the spring (exact date TBD). **We are looking for multiple different company representatives to serve as speakers and talk about their experiences and answer questions about identity, allyship, and diversity.**



HeForSWE Partnerships



Our HeForSWE affinity group works to promote male allyship towards women in engineering and encourage our male counterparts to foster inclusive environments that support women. We support discussions about the intersections of allyship and invite all members to participate.

Scholarships & Conferences

OSU SWE is committed to our members and investing in their futures and success in college and beyond. Special opportunities for members include attending conferences run by Societal SWE, an international not-for-profit organization that empowers women engineers with multiple sections throughout the world. Additionally, OSU SWE supports its members by providing scholarships for dedicated members to encourage them in their pursuits. **If you're interested in learning more about how you can help us support our members by making monetary contributions, please reach out for more information!**



Section Scholarships



At the end of each academic year, top-performing OSU SWE members are awarded scholarships based on SWE involvement, university leadership, academics, and professional experience. We are proud to award many scholarships to our members each year.

Conference

At conferences, our members can engage with other SWE sections and companies in a larger setting, gain beneficial career and personal advice, and create memories that will last a lifetime. Our section hosts meetings prior to attending conferences to inform attendees about the logistics of the trip as well as distribute swag.



If you're interested in learning more about conferences and how to support our section, please reach out for more information! We are also willing to feature company logos on our swag if you help finance our trip/experience in any way!

WE24 Societal Conference

This is one of the best ways to sponsor our members! Since 2014, OSU SWE has provided scholarships for students selected to attend the annual SWE conference. This scholarship equates to roughly \$1,000 and covers transportation, meals, and lodging. This past year, we took 36 members to the WE24



Conference in Chicago, IL. **The 2025 societal conference will be held on Oct 23-25 in New Orleans, LA. We appreciate any contributions if you're interested in supporting our members in this way.**



WE Local 2024 Conference

Every spring, OSU SWE selects members to attend a local SWE conference to engage in professional development, personal learning, and networking. In 2024, we were able to take a record number of 40 members from our section to Las Vegas, NV to engage in these activities! Ohio State's SWE section will be attending WE Local 2026 in Columbus from Mar 13 - Mar 14. **We appreciate any contributions** - this is a great way for our members to learn and enhance their professional skills.



Professional Development (PD)

OSU SWE is committed to providing our members the resources and network needed to succeed in the professional world as they begin their careers. We host a variety of events to allow our members to grow professionally as well as gain access to networking with various companies.

These events tend to be the most popular with sponsoring companies, so please express interest in these opportunities as early as possible by reaching out for more information on how to get involved!



Annual SWE Career Fair - ☆OPEN TO ALL COMPANIES!☆



Each spring semester, SWE partners with Ohio State's Engineering Career Services to host an annual career fair open to all OSU engineering students. Each year, thousands of highly qualified individuals seeking internships, co-ops, and full-time career opportunities attend this career fair. This year's date is TBD. ****This is an excellent**

opportunity to increase visibility for your organization or company.**

Networking Night

This year OSU SWE will host 2 in-person Networking Night events. Our Fall Networking Night will happen in the fall semester before the Engineering Career Fair in mid-September and our Spring Networking Night will happen in the spring semester before



the SWE Career Fair at the end of January. We aim to provide an informal opportunity for face-to-face interactions between recruiters and talented students. **This is a great opportunity to increase visibility for your organization or company in a smaller setting with our talented members.**

PD Events

While Ohio State SWE **DOES NOT** host company info sessions, we regularly partner with companies to create unique and useful professional development events both for students and companies. PD events are structured around a predetermined topic such as mock interviews, resume reviews, elevator pitch preparation, salary negotiation, creating an impactful LinkedIn presence, and career fair preparation. **Representatives are able to talk about their company for approximately 10 - 15 minutes at these events and are encouraged to network with students as well.**



These events provide a great opportunity for companies to explain more about what they do while providing beneficial support for career development.

Career Confidence Series

This series of events occurs during the fall semester in preparation for the Fall Career Fair and helps our members gain the professional-related skills that will set them up for success. Each event is centered around a specific professional development topic such as career fair 101, interviewing etiquette, resume reviews, mock interviews, elevator pitch prep, and more.

Members who participate in this series receive access to all the resources presented at these events and additional resources. Those that complete and attend a majority of the events receive professional prizes such as padfolios, business bags, professional clothing gift cards, and more.

All of these events will be hosted with companies and we are open to collaboration. We are open to hosting in-person or virtual events or if companies are interested in partnering in a different way (donating raffle prizes).

Fashion Show

This award-winning event is hosted near the end of the year and is an event that helps students understand the difference between different categories of professional fashion whether it's business casual to business formal. This event is open for members to model various examples of these types of outfits



so students feel

confident in what they're wearing when they step into industry. There is also a pop-up shop that is open before and after the show that sells gently used professional clothing through our local partner, Dress for Success. Snacks and refreshments are provided as well. **If you are**

interested in providing raffle prizes to be

distributed at this event or getting involved, please don't hesitate to reach out!



Thank you to our Sponsors!

We would like to thank the following companies & organizations for working with and supporting OSU SWE during the 2024-2025 academic year. Our events would not be possible without support from our sponsors.

If your company is interested in involvement with OSU SWE, please contact Emily Claypool (claypool.76@osu.edu) to discuss event collaboration and sponsorship opportunities. Please feel free to contact us with questions as well. Thank you once again and we look forward to working with you!

